

# Schoolers of the American Northwest

## *Descendants of Benjamin Harrison Schooler*

The branch of the Schooler family descended from Benjamin Harrison Schooler of Logan County, Ohio (generation 6) migrated west to Iowa, then to Idaho and Washington. Most of this information was compiled by Elizabeth Schooler Watkins.

*Generation No. 7*

---

**120. William<sup>7</sup> Schooler** (Benjamin Harrison<sup>6</sup>, William<sup>5</sup>, Benjamin Reason<sup>4</sup>, John<sup>3</sup>, Thomas<sup>2</sup>, William<sup>1</sup>)<sup>158</sup>

---

Born: August 26, 1802 in Harrison County, Kentucky  
Died: 1875 in Worth ,Boone County, Iowa

---

Married: **(1) Sarah “Sally” Douglas<sup>158</sup>** April 14, 1825 in Logan County, Ohio<sup>159</sup>.

---

Died: February 1826 in Logan County, Ohio

---

### Child

---

+ 169          i. **William Douglas<sup>8</sup> Schooler**, born February 06, 1826.

---

---

Married: **(2) Sarah Keith<sup>160</sup>** March 24, 1827 in Logan County, Ohio.

---

Died: 1828 in Logan County, Ohio

---

### Child

---

+ 170          i. **Sarah<sup>8</sup> Schooler**, born 1828.

---

---

Married: **(3) Mary Nichols<sup>160</sup>** October 12, 1830 in Logan County, Ohio.

---

Born: October 1809 in Champaign County, Ohio  
Died: Between 1851 - 1854 in Grundy County, Missouri

---

### Children

---

+ 171          i. **John Elbert<sup>8</sup> Schooler**, born July 12, 1832; died August 14, 1883.

---

172          ii. **Jane Schooler<sup>162</sup>**, born 1833.

---

173          iii. **Margaret Ann Schooler<sup>162</sup>**, born 1835.

---

174	iv.	<b>Simon Schooler</b> <sup>162</sup> , born 1840.
175	v.	<b>Benjamin Clay Schooler</b> <sup>162</sup> , born 1843.
+ 176	vi.	<b>Martha Comforter Schooler</b> , born July 31, 1846.
177	vii.	<b>Westly G Schooler</b> <sup>162</sup> , born 1847.
178	viii.	<b>Catherine M Schooler</b> <sup>162</sup> , born 1849.
179	ix.	<b>Ninian Harrison Schooler</b> <sup>162</sup> , born 1851.

Married: **(4) Hulda Vontrees**<sup>160</sup> November 29, 1855 in Boone County, Iowa.

Born: 1802 in Kentucky

More About William Schooler:

1804: Moved from Kentucky to Ohio.

1830: Appears in census, Logan County, Ohio, two houses away from his father (pg 62 ).

1839: Moved to Grundy County, Missouri with his brother Charles and his wife Mary.

After 1839: First schoolmaster in Grundy County, Missouri - compensation was about \$16 per month. William and Mary were Methodists, among members of the first Methodist Episcopal church in Grundy County, Missouri. The first religious services were conducted by a Methodist circuit rider at the homes of David Ashbrook and William Schooler.

1840: Appears in census, Livingston County (later Grundy County), Missouri (pg 280).

June 19, 1841: Elected justice of the peace for Franklin Township ("History of Grundy County, Missouri")

1850: Appears in census, Grundy County, Missouri (pg 412).

1856: Appears in State Census, Boone County, Iowa.

1860: Appears in census, Worth Township, Boone County, Iowa (pg 292).

1870: Appears in census, Des Moines Township, Boone County, Iowa (pg 21).

More About Mary Nichols:

1850: Appears in census, Grundy County, Missouri (pg 412)

More About Hulda Vontrees:

1856: Appears in State Census, Boone County, Iowa.

1860: Appears in census, Worth Township, Boone County, Iowa (pg 292).

1870: Appears in census, Des Moines Township, Boone County, Iowa (pg 21).

---

**121. John<sup>7</sup> Schooler** (Benjamin Harrison<sup>6</sup>, William<sup>5</sup>, Benjamin Reason<sup>4</sup>, John<sup>3</sup>, Thomas<sup>2</sup>, William<sup>1</sup>)<sup>163</sup>

---

Born: September 29, 1805 in Champaign County, Ohio

Died: December 12, 1875 in Mill Grove, Mercer County, Missouri; buried in Coon Cemetery, Mill Grove, Mercer County, Missouri

---

Married: **Elizabeth Ann Randall**<sup>163</sup> May 15, 1826 in Shelby County, Ohio, daughter of **Abraham Randall** and **Margaret ?**.

---

Born: July 07, 1809 in Virginia

Died: May 15, 1887 in Mill Grove, Mercer County, Missouri<sup>164</sup>; buried in Coon Cemetery, Mill Grove, Mercer County, Missouri

---

---

**Children**

---

- |       |     |       |  |
|-------|-----|-------|--|
| +     | 180 | i.    | <b>William<sup>8</sup> Schooler</b> , born March 1829 in Logan County, Ohio; died April 17, 1900.  |
| <hr/> |     |       |  |
| +     | 181 | ii.   | <b>Abram Schooler</b> , born 1830 in Logan County, Ohio; died 1862.  |
| <hr/> |     |       |  |
| +     | 182 | iii.  | <b>Margaret Schooler</b> , born August 07, 1833; died January 27, 1915 in Grundy County, Missouri.   |
| <hr/> |     |       |  |
| +     | 183 | iv.   | <b>John Schooler</b> , born October 21, 1837 in Shelby County, Ohio; died February 08, 1876 in Mercer County, Missouri.  |
| <hr/> |     |       |  |
|       | 184 | v.    | <b>Harrison Benjamin Schooler</b> <sup>165</sup> , born September 25, 1839 in Shelby County, Ohio; died June 28, 1917. He married <b>Sarah Ann Clemens</b> <sup>165</sup> June 01, 1864. |
| <hr/> |     |       |  |
| +     | 185 | vi.   | <b>Job Art Schooler</b> , born August 01, 1842 in Logan County, Ohio.  |
| <hr/> |     |       |  |
| +     | 186 | vii.  | <b>Milton E Schooler</b> , born May 12, 1844 in Grundy County, Missouri.   |
| <hr/> |     |       |  |
|       | 187 | viii. | <b>Sarah Jane Schooler</b> <sup>165</sup> , born 1847. She married <b>Joel Hammond</b> .   |
| <hr/> |     |       |  |
|       | 188 | ix.   | <b>Mary Schooler</b> <sup>165</sup> , born February 18, 1853 in Mercer County, Missouri. She married <b>Scott Oyler</b> <sup>165</sup> .   |
| <hr/> |     |       |  |
|       | 189 | x.    | <b>Martha Schooler</b> <sup>165</sup> , born February 18, 1853 in Mercer County, Missouri. She married <b>Tom King</b> <sup>165</sup> .  |
- 

More About John Schooler:

1830: Appears in census, Miami Township, Logan County, Ohio, next door to William Keith, probably father of his future son-in-law (pg 61).

1840: Appears in census, Logan County, Ohio.

1850: Appears in census, Grundy County, Missouri.

May 07, 1855: Purchased 40 acres of land at Mill Grove, Mercer County, Missouri for \$29.00. The final title was granted November 10, 1859.

February 20, 1857: Purchased another 40 acres of land about two miles from the earlier purchase.

1860: Appears in census, Mercer County, Missouri.

1870: Appears in census, Mercer County, Missouri (Washington ) (pg 217).

December 9, 1875: In administrator's inventory, the Estate of John Schooler lists the following heirs: Elizabeth A. Schooler, widow, William Schooler, son, John Schooler, son, Milton Schooler, son, Job Schooler, son, B. H. Schooler, son, Martha King, daughter, Mary Oiler, daughter, Rachel (Ruth or Nuth), daughter, and minor heirs of Sara Jane Hammond, grandchildren.

#### More About Elizabeth Ann Randall:

1840: Appears in census, Logan County, Ohio.

1850: Appears in census, Grundy County, Missouri.

1860: Appears in census, Mercer County, Missouri.

1870: Appears in census, Washington Township, Mercer County, Missouri (pg 217).

1880: Appears in census, Mercer County, Missouri, living with Peter Scott and family.

---

**122. Charles Harrison<sup>7</sup> Schooler** (Benjamin Harrison<sup>6</sup>, William<sup>5</sup>, Benjamin Reason<sup>4</sup>, John<sup>3</sup>, Thomas<sup>2</sup>, William<sup>1</sup>)<sup>166</sup>

---

Born: 1807 in Champaign County, Ohio (obituary states Logan County)

Died: January 06, 1865 in Ringgold County, Iowa

---

Married: **(1) Hannah Paige<sup>166</sup>** August 30, 1829 in Pleasant Township, Clark County, Ohio<sup>167</sup>, daughter of **Jonathan Paige** and **Hannah Jones**, by Samuel Lafferty, Justice of Peace.

---

Born: January 10, 1804 in Clark County, Kentucky

Died: Between 1845 - 1846 in Ringgold County, Iowa; buried in Schooler's Grove, Iowa

---

#### **Children**

---

190      i.   **Margaret<sup>8</sup> Schooler<sup>170</sup>**, born September 27, 1830; died April 05, 1887. She married **James Allen Robertson<sup>170</sup>** January 07, 1849.

---

191      ii.   **Clarissa Schooler<sup>170</sup>**, born 1835. She married **Rev. William T Martin<sup>170</sup>** July 10, 1860 in Ringgold County, Iowa.

---

---

Married: **(2) Mehitabel Barber<sup>168</sup>** 1846 in Ringgold County, Iowa.

---

Born: 1819 in Ohio

Died: 1870 in Worth County, Missouri

---

#### **Children**

---

192      i.   **Monoah Barber<sup>8</sup> Schooler<sup>170</sup>**, born October 24, 1847. He married (1) **Sarah ?** in Ringgold

---

County, Iowa. He married (2) **Delilah Ayre**<sup>170</sup> December 30, 1865.

193	ii.	<b>Charles Taylor Schooler</b> <sup>170</sup> , born 1850. He married <b>Alice Robinson</b> <sup>170</sup> .
+ 194	iii.	<b>Benjamin Harrison Schooler</b> , born November 21, 1852; died October 08, 1915.
195	iv.	<b>John Elvis Schooler</b> <sup>170</sup> , born July 28, 1855 in Worth County, Missouri. He married <b>Hannah Whitmerin</b> September 01, 1881.

More About Charles Harrison Schooler:

Charles and his brother William were among the early settlers who came to Grundy County, Missouri in the spring of 1839. An article in the *Mt. Ayr, Ringgold Record* January 20, 1881, says that "Charles H. Schooler, who died in Ringgold County, Iowa on January 6, 1865, was the first white man who settled in the county. He was born in Logan County, Ohio in 1807. He and his father were Revolutionary War Soldiers [sic]. In 1840 Charles started for the West with a five horse team, stopping in Mercer County, Missouri. It was too early to enter land in that county, as it had not come into the market and he moved to Gallena, Illinois. Here sickness and bad luck broke him up, and he sold his team, wagon, etc., and took his family down the Mississippi to St. Louis and then up the Missouri and settled in Ray County, Missouri. In August 1845 he settled in this county, on land now owned by Mr. Timby. He thought he was settling in another part of Missouri. The location of the State line occasioned much trouble and was not finally settled upon until about 1852. Mr. Schooler was the lone white man in the county for a year. Elam Barbour moved in in 1846. Mr. Barbour had come with Schooler in 1845 (probably his father-in-law) and helped raise his house, but did not move here till the next year. This house had a hole for a window but no sash or glass, a stick and sod chimney, and the floor was made of cottonwood puncheons. He made his own furniture, the bedstead being a part of the house. His stock was a yoke of oxen. His trading was done at Albany, then Athens, Missouri, 40 miles from Mt. Ayr. Soon after moving here, Mr. Schooler was called to help a Mr. Gay put in a water mill at Athens. While there he took down sick and it was six weeks before Mrs. Schooler knew of it, as he had no way to notify his family. For months he saw no human beings except the members of his own family and Indians. On the 21st of November, 1846, a snow fell waist deep. Mr. Schooler's corn was in the patch and he could only get it by carrying it out a sackfull at a time. This snow stayed until March, 1847. It became hard to walk on during the winter. The Indians entertained a high opinion of Schooler. Once he and his family were away on a five weeks visit to Missouri, and when they returned they found the meat which had been salted down on the porch, untouched. Mr. Schooler was an inveterate hunter and frequently killed four deer in a day.

"Barbour moved in, as has been said, in 1846. In 1847 James Tetherou settled where Zeek now lives. Others did not come for several years. Mr. Schooler could not enter the land he lived on until it came into the market in 1854. He hauled goods 75 and 100 miles and paid \$2 for corn often. Perhaps no one who ever lived in the county was on terms so familiar with the Red men as Mr. Schooler and when the trouble broke out in 1855, he went to the Indians on Sand Creek and conferred with the Chiefs and leading braves. He became satisfied that they were not guilty and returned home, refusing to have anything to do with the racket, but to satisfy Mrs. Schooler, who in common with her neighbors had become very nervous in anticipation of a general massacre, he moved in to Denver, Missouri, now Fairview. Here he met the Indians, when they were being taken away. 'Col John' shook his hand and cried over the abuses they were suffering, declaring their innocence. Mr. Schooler collected the taxes every year and paid them over to the Taylor County officers. At the first election, at Mrs. Himes, in 1855 when this county was organized, he was put in County Superintendent of schools, but declined the office. Mr. Wendell Poor was appointed in his place. Mr. Schooler served several terms as Sheriff of the County. The first school taught in the county was by John Cunningham in a log house on Schooler's land. Manoah (Mack) attended and there were besides him Return, Sarah and Peter Case, Jane Alexander and Alfred Forbes from Missouri, Frank and James Harrow, Susan Cunningham and Charles T. Schooler. The seats were halves of trees with legs inserted, extending the length of the house. The teacher was given to tantrums and whipped each one several times a week. Mr. Schooler's house was an early preaching place. In October 1852 the county judge of Taylor County ordered that Ringgold County be a separate election precinct to be called Schooler Township."

Even though the preceeding article states that he and his father were Revolutionary War soldiers, that is not true. Charles Harrison Schooler was born 30 years after the beginning of the Revolutionary War and Elizabeth Schooler Watkins has the Military Affidavit of Widows claim made out by his stepmother for the service of Benjamin Schooler as a Captain in the 3rd Ohio Militia during the War of 1812.

1839: Moved to Grundy County, Missouri.

1840: Appears in census, Livingston County (later Grundy County), Missouri (pg 263).

August 1845: Moved to Ringgold County, Iowa.

1855: Appears in State Census, Lotts Creek Township, Ringgold County, Iowa; states he is a nine year resident.

1860: Appears in census, Lotts Creek Township, Ringgold County, Iowa (pg 608)

#### More About Hannah Paige:

Hannah's was the first white death in the county, probably in childbirth, and was buried with her child.

#### More About Mehitable Barber:

Mehitable was supposedly half Cherokee.

1855: Appears in State Census, Lotts Creek Township, Ringgold County, Iowa.

1860: Appears in census, Lotts Creek Township, Ringgold County, Iowa (pg 608).

1870: Appears in census, Allen Township, Worth County, Missouri (pg 368).

---

**123. Evan Jones<sup>7</sup> Schooler** (Benjamin Harrison<sup>6</sup>, William<sup>5</sup>, Benjamin Reason<sup>4</sup>, John<sup>3</sup>, Thomas<sup>2</sup>, William<sup>1</sup>)<sup>171</sup>

---

Born: October 11, 1809 in Champaign County, Ohio

Died: December 20, 1885 in Johnson Township, Champaign County, Ohio

---

Married: **Rachel Cox**<sup>171</sup> December 22, 1831 (another source shows September 10, 1835) in Logan County, Ohio.

---

Born: 1806 in Pennsylvania.

---

#### **Child**

---

+ 196 i. **J T<sup>8</sup> Schooler**, born September 05, 1844 in Logan County, Ohio.

---

#### More About Evan Jones Schooler:

1840: Appears in census, Logan County, Ohio, living next door to his brother Lewis Schooler.

1850: Appears in census, Miami Township, Logan County, Ohio; his stepmother was living with them, and they were living next door to his brother Lewis Schooler (pg 78).

1860: Appears in census, Miami Township, Logan County, Ohio; his stepmother was living with them (pg 82).

September 1874: Moved to Champaign County, Ohio.

1880: Appears in census, Johnson Township, Champaign County, Ohio (pg 283).

---

More About Rachel Cox:

1850: Appears in census, Miami Township, Logan County, Ohio (pg 78)

1860: Appears in census, Miami Township, Logan County, Ohio (pg 82)

1880: Appears in census, Johnson Township, Champaign County, Ohio (pg 283)

---

**126. Harrison<sup>7</sup> Schooler** (Benjamin Harrison<sup>6</sup>, William<sup>5</sup>, Benjamin Reason<sup>4</sup>, John<sup>3</sup>, Thomas<sup>2</sup>, William<sup>1</sup>)<sup>171</sup>

---

Born: March 17, 1813 in Miami Township, Logan County, Ohio<sup>172</sup>

Died: 1900 in Hagerman, Gooding County, Idaho; buried in Pioneer Cemetery, Hagerman, Gooding County, Idaho.

---

Married: **Mary Elizabeth Dillon**<sup>173</sup> December 24, 1834 in Logansville, Logan County, Ohio<sup>174</sup>.

---

Born: July 24, 1813 in Clark County, Ohio<sup>175</sup>

Died: October 15, 1898 in Hagerman, Gooding County, Idaho<sup>176</sup>; buried in Pioneer Cemetery, Hagerman, Gooding County, Idaho.

---

**Children**

---

- 197      i. **Richard<sup>8</sup> Schooler**<sup>178</sup>, born April 16, 1836 in Logan County, Ohio; died April 02, 1903 in Gooding, Goodin County, Idaho<sup>179</sup>; buried in Old Gooding Cemetery, NE Gooding, Gooding County, Idaho. He married (1) **Mary Elizabeth Carter**<sup>180</sup> February 14, 1856 in Wapello County, Iowa<sup>181</sup>; born May 01, 1841 in Gooding, Gooding County, Idaho; died November 1884 in Gooding, Gooding County, Idaho; buried in Gooding Cemetery, Gooding, Gooding County, Idaho. He married (2) **Sarah Catherine "Sade" James**<sup>182</sup> August 01, 1886 in Wapello County, Iowa<sup>183</sup>; born August 29, 1856 in Batavia, Jefferson County, Iowa; died February 07, 1956 in Gooding, Gooding County, Idaho; buried in Hagerman Cemetery, Hagerman, Gooding County, Idaho.

---

More About Richard Schooler:

Richard was a registered voter and member of the Militia in Agency, Wapello County, Iowa. William & Richard are in a Tax List of Boise Valley 1866. Richard was taxed \$10.00 in Div. 1, Dist. 1, Boise Valley, Idaho. Harrison and Richard purchased the "Falils (or Fales) Ranch" at Toponis, Logan County (Logan County was made from Alterus County, but both were discontinued when Lincoln County was organized) on the Big Wood River. At one point Richard went into partnership with Hugh Allen, Frank Fulton and Warren Lockman to raise cattle. They decided to buy a herd of Texas longhorns that were to be delivered at or near Salt Lake City, sometime between the middle of September and the first of October. The men, all rigged up for a two week's drive of cattle, started for Salt Lake City the last week of September. When they arrived, they learned the cattle would not be there for three weeks yet. They had to wait for them to arrive. Then it didn't turn out to be a very profitable venture, so they decided they would move to Texas to try their hand at it there. It was 1876 when they left Idaho to try raising cattle in Texas, and they encountered some new sights. In southern Kansas, Richard spotted his first cotton

field, but didn't realize what it was. Thinking it was cockleburrs, he supposed the farmer was really shiftless. When Hugh Allen's brother-in-law Doc Callaway explained what it was, he had to stand for some joking about the cocklebur patch. His nephew Wilbur told the story for many years about the family's first experience of a cotton field. After they crossed the Arkansas River, Richard, his parents, Hugh Allen's family and Doc Callaway's family all went to Arkansas to visit friends and relatives who had left Texas before going on to Texas. William is not mentioned; he and his family went back to Iowa before making the trip to Texas. The Schoolers arrived in Texas 6 weeks after the Fultons and so were not very prepared for the winter which was coming. All in all the move to Texas was not a good one and by 1879 they were back in Idaho to stay. After coming back to Idaho they started freighting again and the story is told about Richard making a bet that he could turn his freight outfit around in the street in Boise. A lot of money was bet on this turn around, for no one believed he could do it. He had 16 head of horses pulling three wagons which could haul 30,000 lbs a trip. Richard did win the bet, for he was able to turn the outfit around right in the middle of the street. At this time, the ranching that they did was to raise horses for the freighting venture. His nephew Wilbur helped raise and break the horses. Later, Richard, along with his father Harrison and his brother William, purchased an enclosed wagon with fine teams and began the "Schooler's Gramophone and Sciopticon Company" which had the name decoratively written on the sides of the wagon. It was something on the order of a mobile movie theatre. (See below, "Sciopticon or Magic Lantern - Slide Projector".) About 1884 Richard's wife Mary died. She is buried on the Ranch near Big Wood River. However, there is not a gravestone or marker. Richard returned to Eldon, Iowa, with the intent of re-marrying. He and his children required a wife and mother on the ranch. On August 7, 1886 in Batavia, Jefferson County, Iowa, he married Sarah Cathryn James, widow of Curtis Hill. She had two daughters, Nellie Grace Hill and Mary Ann Hill. One descendant of Richard's recalls her mother saying that Sarah thought Richard was a wealthy cattleman, like the Texas tycoons we hear of today, and was sorely disappointed upon reaching the ranch at Toponis. Richard is mentioned quite often in the story *Tales of the Trail* by Arabella Clemens Fulton. (Elizabeth Schooler Watkins)

1856: Appears in State Census, Agency, Wapello County, Iowa; it says he had been living in the state 9 years.

1860: Appears in census, Agency, Wapello Co, Iowa.

1862: Moved to Idaho.

1870: Appears in census, Ada County, Idaho Territory; living 4 houses away with a Ligget family was Warren Lockman and 5 houses away was Frank Fulton, partners in the cattle venture with Richard and his brother-in-law Hugh Allen (pg 34).

1880: Appears in census, Ada County, Idaho Territory (pg 37).

1900: Appears in census, Lincoln County, Idaho (Malad precinct); living with his son.

#### More About Mary Elizabeth Carter:

1856: Appears in state census, Agency, Wapello County, Iowa; it says she had been living in the state 2 years.

1880: Appears in census, Ada County, Idaho Territory (pg 37).

#### More About Sarah Catherine James:

Sade's granddaughter, Vashti Perkins, tells the story about how Richard Schooler, after losing his first wife Mary Carter Schooler, went to Iowa for a visit and to find a new wife. Just how he and Sarah Catherine James (Aunt Sade) met is unknown. She had been married before, to Curtis Hill, who was a druggist in Iowa, and they had two girls, Nellie Grace and Mary Ann (Mollie) before he died of tuberculosis. Richard told her he had a large cattle ranch out West in Idaho, which wasn't exactly the complete truth. He did have a large place, but it was not very profitable at the time, but she evidently thought she was marrying a well-to-do rancher. After Richard and Sade married, he must have gone back to Idaho first, without his new wife. When she came West, she rented a railroad car and brought a cow and other livestock with her, as well as the two girls. They were met in Toponis (now Gooding) by Richard, his children, and all their friends and neighbors. Sarah and her two daughters were dressed in lace and had lots of carpet bags, hats and all the frills of the Midwest. They all loaded into the buck boards, leading the cow and other animals that



Sarah brought with her. The neighbors laughed at Sarah and her well dressed girls saying they would return to Iowa before the month was up. Sarah was a small lady, about 5 feet 4, and never weighed over 135 to 140 pounds. Within a few days after arriving at the Wood River Ranch (now the Fales Ranch) she had cleaned the house, had a lace table cloth on the old wooden table, rugs that she had made in Iowa on the floors, and window curtains up. But she also would go outside and cut wood. Then the neighbors decided she was a great lady and probably would stick it out. To Richard and Sarah Catherine three children were born. They suffered lots of hardships. Their house burned to the ground and all that was saved was the old Schooler Bible, which is now in the possession of Vashti Perkins. May Sedonia was so afraid of the fire she ran and hid down over the edge of the river bank. After the fire was out, they were afraid she had been in the house and had burned to death. But she was soon found. If Sade was going to spank her, May would run into the bedroom with her sick father and he would hide her in or under his bed. Shortly after the fire, Richard died of cancer on his lip caused by his pipe. After Richard passed away, Mary Ann married Thomas Alley. He was a telegrapher on the railroad and they lived in Bliss, Idaho after they first married. They then moved to Emmett, Idaho where Nellie Grace married John Johnston and where Sade and the rest of her family lived. Mary Ann (Molly and Tom) sold their ranch in Emmett and built the old Hagerman Hotel. Then Sarah Catherine and her children moved to Hagerman and did washing at the hotel for Molly and Tom. Later Sarah C. bought a home and paid for it by taking in washing and baking bread for the Hagerman people and stores. After she paid for her home she also cooked at the Sand Spring Ranch where Albert Stanton Clark worked. She cooked for 20 to 30 men during hay season, harvest, and round up time. She lived alone until she was in her 80s. After Tom Alley died, she lived with her daughter Mary Ann (Molly) till her death in 1956. If she had lived 5 more months she would have been 100 years old. She used to say to Richard, "Your kids and my kids are fighting with our kids". (Elizabeth Schooler Watkins)

1900: Appears in census, Batavia, Jefferson County, Iowa; living with her step father.

1920: Appears in census, Hagerman, Gooding County, Idaho (pg 41).

- 
- |       |  |
|-------|--|
| + 198 | ii. <b>William Harrison Schooler</b> , born December 17, 1842 in Bartholomew, Bartholomew County, Indiana; died October 09, 1907 in Hagerman, Lincoln County, Idaho. |
|-------|--|
- 
- |     |  |
|-----|--|
| 199 | iii. <b>Hannah Elizabeth Schooler</b> <sup>186</sup> , born May 27, 1847 in Agency, Wapello County, Iowa; died between 1910 - 1920 in Sycamore, Wise County, Texas. She married <b>Hugh Brown Allen</b> <sup>186</sup> March 28, 1867 in Middleton, Ada County, Idaho <sup>187</sup> (witnessed by Richard Schooler, Hannah's brother); born June 11, 1839 in Cole County, Missouri; died December 06, 1894 in Sycamore, Wise County, Texas <sup>188</sup> ; buried in Sycamore Cemetery, Sycamore, Wise, Texas. |
|-----|--|
- 

More About Hannah Elizabeth Schooler:

Hannah is mentioned in the story *Tales of the Trail* by Arabella Clemens Fulton. For many years, I wondered why I couldn't find anything in Idaho about this family, after the mid 1870s. As it turns out, it was because they stayed in Texas, and I never thought to check there, until I found Arabella's story. (Elizabeth Schooler Watkins)

1856: Appears in state census, Agency, Wapello County, Iowa

1860: Appears in census, Washington Township, Wapello County, Iowa (pg 163).

1880: Appears in census, Wise County, Texas (Precinct 6) (pg 227)

1910: Appears in census, Greenwood Village, Wise County, Texas; living with her two youngest sons and daughter.

More About Hugh Brown Allen:

Hugh was originally from Missouri and moved to Texas with his family. He left there to go to California during the gold rush. Hugh is mentioned in the story, *Tales of the Trail* by Arabella Clemens Fulton. Hugh Brown Allen and Arabella's husband Frank Fulton had originally met in California during the gold excitement and had tramped from one mine to another, all through California and at last went to the Bannock mines of Idaho. Hugh is listed on the first Poll Lists of Idaho Territory in 1863 at Placerville precinct, Boise County. After becoming tired of mining they decide to try their hand at a new industry. They bought a pack train of fifteen mules and horses and began to pack supplies to the mines from the Umatilla Landing on the Columbia River. One

winter they wintered their stock in Boise valley and decided to stay there and start ranches. This is where he met his future wife, Hannah Schooler, and her family. Richard Schooler, Hannah's brother, Warren Lockman, Frank Fulton, and Hugh formed a cattle company to buy Texas long-horn cattle to raise in Idaho, and after it didn't work out the way they planned, they eventually went to Texas. Before getting there, they first went to Arkansas, evidently to pick up Hugh's family to go to Texas with them. This was not exactly an easy endeavor in that day and age, especially since Arkansas is not on the trail from Idaho to Texas. Hugh and Hannah stayed in Texas the rest of their lives near his family. But her family didn't stay; they returned to Idaho and settled in the Hagerman Valley. Frank and Arabella Fulton went on to Washington and settled at Ellensburg in Kittitas County. (Elizabeth Schooler Watkins)

1850: Appears in census, Tarrant County, Texas (Navarro District)

1860: Appears in census, Catlett Creek, Wise County, Texas.

Between 1861 – 1865: Served in the Civil War in William R. Shoemaker's Company D State Troops. In 1864 they were transferred to the Confederate troops.

1870: Appears in census, Boise, Ada County, Idaho; next door was his sister Mary Ann and her husband Thomas H. (Doc) Calloway. Three houses away was Warren Lockman, living with a Liggett family. Four houses away was Frank and Arabella Fulton, all partners with Hugh Allen and Richard.

1880: Appears in census, Wise County, Texas (Precinct 6); next door was his sister, Sabina Eads (pg 227).

- 
- |     |  |
|-----|--|
| 200 | iv. <b>Mary Nancy Carolina Schooler<sup>190</sup></b> , born June 21, 1850 in Wapello County, Iowa; died August 25, 1860 in Wapello County, Iowa <sup>191</sup> ; buried in Agency Cemetery, Agency, Wapello County, Iowa. |
|-----|--|

More About Mary Nancy Carolina Schooler:

1856: Appears in State Census, Agency, Wapello County, Iowa (pg 13)

1860: Appears in census, Washington Township, Wapello County, Iowa (pg 163)

---

More About Harrison Schooler:

Harrison Schooler was born in Champaign County, Ohio about 9 years after his parents moved there from Harrison County, Kentucky. His mother died shortly after his birth while his father was serving in the War of 1812. Many hardships were faced by these frontier families; unfortunately a diary or journal has not been handed down to tell us of these events or the interesting things happening to them. Harrison and his son Richard are listed as registered voters and member of the Militia in Agency, Wapello County, Iowa. About 1865-66 Harrison and his sons Richard and William and their families decide to move West again. Kay Schooler figured out the route that they must have taken on the journey West. The only well traveled "road" west of the Mississippi River was the Oregon Trail, so she assumed that was the course they traveled after reaching Independence, Missouri. They followed a trail which ran in a northwesterly course to Fort Kearney, Nebraska. Then they traveled up the Platte River and its north branch to Fort Laramie, Wyoming. From this point, they continued along the North Platte to its Sweetwater branch, and crossed through South Pass in the Rocky Mountains to the Green River Valley at Fort Bridger, Wyoming. The route turned northwest to Fort Hall on the Snake River in Idaho, and crossing the Snake at "Three Island Crossing", continued on to Fort Boise. This trek usually took about six months. William & Richard are on a Tax List of Boise Valley 1866, where they raised grain. Sometime after the move to Idaho they started a freight company. They moved freight from the Umatilla landing to the Boise area, and from the Boise area to Utah where the railroad ended. They also hauled freight up to the mines in northern Idaho. About 1873-74 Harrison and Mary and most of their family, Richard and his family, and Hannah and her family moved to Texas with Frank and Arabella Fulton and their family. At this time William and Frances were back in Iowa with Frances' parents, but they later joined the rest of the family in Texas for a couple of years before they all moved back to Idaho. Hugh Allen had family in Arkansas, and they went to get them before moving to Arkansas. It is possible they first went to Iowa to pick up William and Francis and their family.

The extra traveling meant that they arrived in Texas late in the year and they were not at all prepared for winter. The move to Texas was not a good one for Harrison and Mary, Richard and Mary, and William and Francis. They were not happy there and did not prosper in the two years that they were there. So, leaving Hugh and Hannah Allen in Texas, they went back to Idaho, poorer but wiser. They started the freight company again and ran freight from Kelton, Utah to Boise until the railroad was finished in 1882. After that they began freighting all over southern Idaho, even from Shoshone to Twin Falls, when Twin was building until 1905, when the railroad came there. Harrison and Richard together with William purchased an enclosed wagon with fine teams sometime before 1900 and began the "Schooler's Gramophone and Sciopticon Company". It was kind of a movie theatre on wheels. The name was decoratively written on the sides of the wagon. (See below, "Sciopticon or Magic Lantern - Slide Projector".) Harrison taught his children how to read and write by having them study each evening from the Bible. In 1900 Harrison, age 87, was living with his son William, but died shortly afterward, although no date is known. He is buried in the Pioneer Cemetery with his wife. The black wrought iron fence that is partially around the Pioneer Cemetery in Hagerman is the fence the Schoolers built around the area of the Schooler plots there. However, the fence was moved to the outer edge of the cemetery in later years by Dick Cook. (Elizabeth Schooler Watkins)

Juanita Stevens somewhere found his name listed as James Harrison Schooler. This could explain why he is named Harrison Schooler when he had an older living brother named Charles Harrison Schooler.

1847: Appears in Special Census, Agency, Wapello County, Iowa (pg 18).

1850: Appears in census, Agency, Wapello County, Iowa, Agency.

December 02, 1850: Harrison was issued a land patent for the SW of SW section 26, township 72, 40 acres, for \$50.00 in Wapello County, Iowa.

1856: Appears in State Census, Agency, Wapello County, Iowa; it states he had lived in the state 10 years (pg 13).

1860: Appears in census, Washington Township, Wapello County, Iowa; living 6 houses away were the Actons (his future daughter-in-law's family) (pg 163).

1870: Appears in census, Ada County, Idaho Territory (Boise District 13); living two houses away were Frank and Arabella Fulton. She was the author of *Tales of the Trail*, which tells about their trip to Texas (pg 34).

1880: Appears in census, Ada County, Idaho Territory (Boise District 2) (pg 37).

1900: Appears in census, Lincoln County, Idaho (Malad precinct); living with his son, William.

#### More About Mary Elizabeth Dillon:

Mary is mentioned in the story *Tales of the Trail* by Arabella Clemens Fulton. She says that Mary was not at all happy with the move to Texas and grumbled about it all the time. Arabella called her "Old Lady Schooler". Mary was a Methodist.

1847: Appears in Special Census, Wapello County, Iowa.

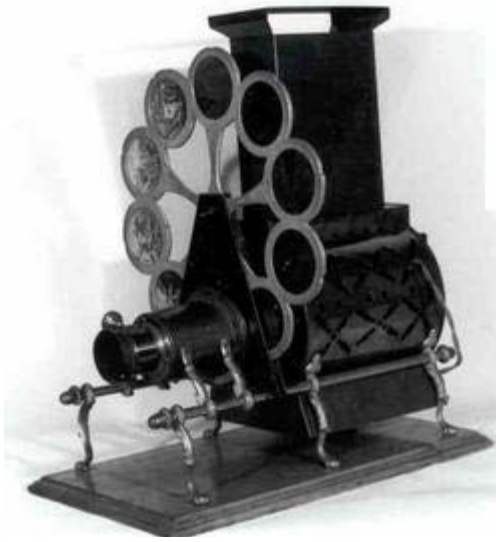
1856: Appears in State Census, Agency, Wapello County, Iowa; it says she had lived in the state 10 years.

1860: Appears in census, Washington Township, Wapello County, Iowa (pg 163).

1870: Appears in Idaho Census, Ada County, Idaho Territory.

1880: Appears in Idaho Census (pg 37).

## Sciopticon or Magic Lantern



“The New Improved Sciopticon Lantern – with Revolving Disc” by The Pettibone Manufacturing Co., Cincinnati, Ohio, circa 1890.

The Magic Lantern, or Sciopticon, was the forerunner of the modern slide projector. Slides, or glass plate positives, were capable of being projected onto a screen or wall, which passed a bright beam of light through the slide and an enlarging lens. The Magic Lantern was an early form of slide projector as well as an early form of moving picture. The glass slides used with Magic lanterns were often moved with levers or other contrivances to make these images appear to “move”.

In the 1840s, Philadelphia daguerreotypists, William and Frederick Langenheim, began experimenting with The Magic Lantern as an apparatus for displaying their photographic

images. Because the opaque nature of the daguerreotype disallowed its projection, the brothers looked for a medium that would create a transparent image. They employed the

discoveries of the French inventor, Niepce de St. Victor, who had discovered a way to adhere a light sensitive solution onto glass for the creation of a negative. By using that negative to print onto another sheet of glass rather than onto paper, the Langenheims were able to create a transparent positive image, suitable for projection. The brothers patented their invention in 1850 and called it a Hyalotype (hyalo is the Greek word for glass). The following year they received a medal at the Crystal Palace Exposition in London.

Slides were placed within a lantern slide projector to be viewed on a wall or screen. The first projectors used oil lamps for light. By 1870, limelight, produced by burning oxygen and hydrogen on a pellet of lime, offered a better, although more dangerous, form of illumination. In the 1890s, the invention of the carbon arc lamp, followed by electric light, provided a safe method for displaying the lantern slide image.

## Schoolers of the American Northwest

### *Descendants of Benjamin Harrison Schooler*

Generation No. 8

---

**169. William Douglas<sup>8</sup> Schooler** (William<sup>7</sup>, Benjamin Harrison<sup>6</sup>, William<sup>5</sup>, Benjamin Reason<sup>4</sup>, John<sup>3</sup>, Thomas<sup>2</sup>, William<sup>1</sup>)<sup>224</sup>

---

Born: February 06, 1826

---

Married: **Malinda Nichols**<sup>224</sup> July 20, 1848, daughter of **Benjamin Nichols** and **Ann Huston**.

---

---

#### Children

- 
- |     |       |   |
|-----|-------|---|
| 243 | i.    | <b>Sally Melissa<sup>9</sup> Schooler</b> <sup>224</sup> . She married ? <b>Cook</b> .    |
| 244 | ii.   | <b>John Schooler</b> <sup>224</sup> .   |
| 245 | iii.  | <b>James Mckendy Schooler</b> <sup>224</sup> .  |
| 246 | iv.   | <b>Harrison Augustus Schooler</b> <sup>224</sup> , born 1852.                             |
| 247 | v.    | <b>Sarah Ann Schooler</b> <sup>224</sup> , born 1855. She married ? <b>Coon</b> .         |
| 248 | vi.   | <b>Martha Louise Schooler</b> <sup>224</sup> , born 1857. She married ? <b>Cornwell</b> . |
| 249 | vii.  | <b>John Westly Schooler</b> <sup>224</sup> , born 1862.                                   |
| 250 | viii. | <b>William Benjamin Schooler</b> <sup>224</sup> , born 1867.                              |
- 

---

**170. Sarah<sup>8</sup> Schooler** (William<sup>7</sup>, Benjamin Harrison<sup>6</sup>, William<sup>5</sup>, Benjamin Reason<sup>4</sup>, John<sup>3</sup>, Thomas<sup>2</sup>, William<sup>1</sup>)<sup>224</sup>

---

Born: 1828.

---

Married **William C Sutton** May 25, 1854 in Grundy County, Missouri.

---

---

#### Children

- 
- |     |      |   |
|-----|------|---|
| 251 | i.   | <b>Westly<sup>9</sup> Sutton</b> , born 1855. |
| 252 | ii.  | <b>Ashley Sutton</b> , born 1857.             |
| 253 | iii. | <b>John Sutton</b> , born 1861.               |
-

---

254      iv.   **Sarah Sutton**, born 1863.

---

255      v.   **Louise Sutton**, born 1865.

---

---

**171. John Elbert<sup>8</sup> Schooler** (William<sup>7</sup>, Benjamin Harrison<sup>6</sup>, William<sup>5</sup>, Benjamin Reason<sup>4</sup>, John<sup>3</sup>, Thomas<sup>2</sup>, William<sup>1</sup>)<sup>224</sup>

---

Born: July 12, 1832  
Died: August 14, 1883

---

Married: **Martha Monima Odom**<sup>224</sup> May 16, 1858, daughter of **John Odom** and **Margaret Gillam**.

---

Born: December 18, 1843

---

---

**Children**

---

+   256      i.   **Laura Josephine<sup>9</sup> Schooler**, born March 28, 1859.

---

+   257      ii.   **Harrison Clay Schooler**, born May 02, 1861.

---

258      iii.   **Ira Taylor Schooler**<sup>224</sup>, born March 23, 1864; died October 27, 1872.

---

+   259      iv.   **Carrie Belle Schooler**, born August 03, 1866.

---

260      v.   **John Odom Schooler**<sup>224</sup>, born November 29, 1868; died August 13, 1870.

---

261      vi.   **Mary Anna Schooler**<sup>224</sup>, born May 21, 1871. She married **George Marris**.

---

+   262      vii.   **Jessie Mildred Schooler**, born December 13, 1874.

---

+   263      viii.   **Effie Mildred Schooler**, born December 13, 1874.

---

---

**176. Martha Comforter<sup>8</sup> Schooler** (William<sup>7</sup>, Benjamin Harrison<sup>6</sup>, William<sup>5</sup>, Benjamin Reason<sup>4</sup>, John<sup>3</sup>, Thomas<sup>2</sup>, William<sup>1</sup>)<sup>224</sup>

---

Born: July 31, 1846.

---

Married **George Waterbury**<sup>224</sup>.

---

---

**Children**

---

264      i.   **Bertha Wilson<sup>9</sup> Waterbury**<sup>224</sup>, born 1882 in Woodburn, Linn County, Oregon.

---

---

**180. William<sup>8</sup> Schooler** (John<sup>7</sup>, Benjamin Harrison<sup>6</sup>, William<sup>5</sup>, Benjamin Reason<sup>4</sup>, John<sup>3</sup>, Thomas<sup>2</sup>, William<sup>1</sup>)<sup>224</sup>

---

Born: March 1829 in Logan County, Ohio

Died: April 17, 1900

---

Married: **Sophia Keith**<sup>224</sup>, December 9, 1849, in Grundy County, Missouri, daughter of **Phillip Keith** and **Addie White**.

---

---

#### Children

---

- |     |       |  |
|-----|-------|--|
| 265 | i.    | <b>Retta<sup>9</sup> Schooler</b> <sup>224</sup> . She married <b>George Gates</b> .   |
| 266 | ii.   | <b>Sarah E Schooler</b> <sup>224</sup> , born 1848. She married ? <b>Bennett</b> .   |
| 267 | iii.  | <b>John Phillip Schooler</b> <sup>224</sup> , born 1850. He married (1) <b>Hannah Osborne</b> . He married (2) <b>Lanah Trussell</b> . |
| 268 | iv.   | <b>Mary J Schooler</b> <sup>224</sup> , born 1852. She married ? <b>Fellows</b> .  |
| 269 | v.    | <b>Nancy Schooler</b> <sup>224</sup> , born 1854.  |
| 270 | vi.   | <b>Martha Schooler</b> <sup>224</sup> , born 1856. She married <b>Larkin D Cornwell</b> 1878.  |
| 271 | vii.  | <b>Louise E Schooler</b> <sup>224</sup> , born 1860. She married <b>Samuel J Prussell</b> 1877.  |
| 272 | viii. | <b>Frances P Schooler</b> <sup>224</sup> , born 1863.  |
| 273 | ix.   | <b>William H Schooler</b> <sup>224</sup> , born 1866.  |
| 274 | x.    | <b>Charles A Schooler</b> <sup>224</sup> , born 1868. He married <b>Flora Pierce</b> .   |
- 

---

**181. Abram<sup>8</sup> Schooler** (John<sup>7</sup>, Benjamin Harrison<sup>6</sup>, William<sup>5</sup>, Benjamin Reason<sup>4</sup>, John<sup>3</sup>, Thomas<sup>2</sup>, William<sup>1</sup>)<sup>224</sup>

---

Born: 1830 in Logan County, Ohio

Died: 1862

---

Married: **Rachel Jane King**<sup>224</sup> April 25, 1852 in Grundy County, Missouri.

---

---

#### Children

---

- |     |     |   |
|-----|-----|---|
| 275 | i.  | <b>Perry<sup>9</sup> Schooler</b> <sup>224</sup> , born 1852. He married <b>Cornelia J Cornwell</b> 1874. |
| 276 | ii. | <b>Francis Marion Schooler</b> <sup>224</sup> , born 1855. He married <b>Eliza Mears</b> .                |
-

---

277      iii. **Viola Schooler**<sup>224</sup>, born 1857.

---

278      iv. **Mary Schooler**<sup>224</sup>, born 1860.

---

279      v. **Abraham Schooler**<sup>224</sup>, born 1862.

---

---

**182. Margaret<sup>8</sup> Schooler** (John<sup>7</sup>, Benjamin Harrison<sup>6</sup>, William<sup>5</sup>, Benjamin Reason<sup>4</sup>, John<sup>3</sup>, Thomas<sup>2</sup>, William<sup>1</sup>)<sup>224</sup>

---

Born: August 07, 1833

Died: January 27, 1915 in Grundy County, Missouri

---

Married **Nathan William Keith**<sup>224</sup> December 9, 1849 in Grundy County, Missouri, son of **William Keith** and **Elizabeth Ashley**.

---

#### Children

---

280      i. **Christopher C<sup>9</sup> Keith**<sup>224</sup>, born December 08, 1850. He married **Hannah E. Herron**.

---

281      ii. **Sarah Jane Keith**<sup>224</sup>, born October 17, 1852. She married ? **Swift**.

---

282      iii. **William Westly Keith**<sup>224</sup>, born February 19, 1855. He married **Elvina Trussell**.

---

283      iv. **Francis Marion Keith**<sup>224</sup>, born May 14, 1857.

---

284      v. **Ezekiel Keith**<sup>224</sup>, born November 30, 1860. He married **Ester ?**.

---

285      vi. **John N Keith**<sup>224</sup>, born July 04, 1863.

---

286      vii. **Thomas Henry Keith**<sup>224</sup>, born December 26, 1866. He married **Mary Ellen King**.

---

287      viii. **Alfred Asbury Keith**<sup>224</sup>, born January 08, 1870.

---

---

**183. John<sup>8</sup> Schooler** (John<sup>7</sup>, Benjamin Harrison<sup>6</sup>, William<sup>5</sup>, Benjamin Reason<sup>4</sup>, John<sup>3</sup>, Thomas<sup>2</sup>, William<sup>1</sup>)<sup>224</sup>

---

Born: October 21, 1837 in Shelby County, Ohio

Died: February 08, 1876 in Mercer County, Missouri

---

Married: **Elizabeth Ann Campbell**<sup>224</sup> June 13, 1860 in Mercer County, Missouri.

---

#### Children

---

288      i. **Mener<sup>9</sup> Schooler**<sup>224</sup>, born 1863.

---

289      ii. **I Monima Schooler**<sup>224</sup>, born 1867.

---



---

**185. Job Art<sup>8</sup> Schooler** (John<sup>7</sup>, Benjamin Harrison<sup>6</sup>, William<sup>5</sup>, Benjamin Reason<sup>4</sup>, John<sup>3</sup>, Thomas<sup>2</sup>, William<sup>1</sup>)<sup>224</sup>

---

Born: August 01, 1842 in Logan County, Ohio

---

Married: **Martha Elizabeth Goe**<sup>224</sup> October 16, 1864 in Mercer County, Missouri.

---

Born: About 1846 in Mercer County, Missouri

---

#### Children

---

- |     |   |
|-----|---|
| 290 | i. <b>William Sherman<sup>9</sup> Schooler</b> <sup>224</sup> , born July 26, 1865 in Middlebury, Mercer County, Missouri. He married <b>Lily Submit Hampshire</b> December 1887 in Princeton, Mercer County, Missouri, born about 1869 in Princeton, Mercer County, Missouri.  |
| 291 | ii. <b>Malissa Jane Schooler</b> <sup>224</sup> , born February 13, 1868. She married <b>Oscar N Austin</b> .   |
| 292 | iii. <b>Georgeann Schooler</b> <sup>224</sup> , born December 05, 1875 in Mercer County, Missouri; died December 17, 1876.  |
| 293 | iv. <b>John H Schooler</b> <sup>224</sup> , born January 28, 1879 in Mill Grove, Mercer County, Missouri <sup>225</sup> ; died January 24, 1904.  |
| 294 | v. <b>Sarah Ellen Schooler</b> <sup>226</sup> , born August 15, 1881 in Mill Grove, Mercer County, Missouri; died July 03, 1904 in Mill Grove, Mercer County, Missouri. She married <b>Warren William DePuy</b> July 03, 1904 in Mill Grove, Mercer County, Missouri; born about 1877 in Mill Grove, Mercer County, Missouri. |
| 295 | vi. <b>Frank Eugene Schooler</b> <sup>226</sup> , born November 03, 1885 in Mill Grove, Mercer County, Missouri; died August 1969 in California <sup>227</sup> He married: <b>Vallie ?</b> .  |
| 296 | vii. <b>Roy Gilbert Schooler</b> <sup>228</sup> , born March 29, 1888 in Mill Grove, Mercer County, Missouri; died February 08, 1963. He married <b>Estell ?</b> .  |
- 

---

**186. Milton E<sup>8</sup> Schooler** (John<sup>7</sup>, Benjamin Harrison<sup>6</sup>, William<sup>5</sup>, Benjamin Reason<sup>4</sup>, John<sup>3</sup>, Thomas<sup>2</sup>, William<sup>1</sup>)<sup>228</sup>

---

Born: May 12, 1844 in Grundy County, Missouri

Died: July 7, 1882 in Grundy County, Missouri; buried Hyatt Cemetery, NE of Spickard, Grundy County, Missouri.

---

Married: **(1) Clora Ann King**<sup>228</sup> February 14, 1867 in Grundy County, Missouri, daughter of **Joshua King** and **Lucinda White**.

---

Born: March 20, 1851 in Grundy County, Missouri

Died: July 7, 1879 in Grundy County, Missouri; buried Hyatt Cemetery, NE of Spickard, Grundy County, Missouri.

---

## Children

---

297	i.	<b>Ulyssess Simpson<sup>9</sup> Schooler<sup>228</sup></b> , born November 14, 1867, died March 21, 1955. He married <b>Elizabeth McLaughlin</b> .
298	ii.	<b>Etta Bell Schooler<sup>22</sup></b> , born May 7, 1869 <sup>8</sup> . She married <b>Jasper Melton</b> .
299	iii.	<b>Perry David Schooler<sup>228</sup></b> , born July 27, 1870, died October 17, 1894. He married <b>Malissa Bosley</b> .
300	iv.	<b>Sally Jane Schooler<sup>228</sup></b> , born October 05, 1871; died December 28, 1871.
301	v.	<b>George Edward Schooler<sup>228</sup></b> , born January 19, 1873, died May 22, 1956. He married <b>Carrie Vird Etherton</b> .
302	vi.	<b>Allie Schooler<sup>228</sup></b> , born November 01, 1874; died March 02, 1875.
303	vii.	<b>Ellie Schooler<sup>228</sup></b> , born November 01, 1874; died May 24, 1875.
304	viii.	<b>Essie Louise Schooler<sup>228</sup></b> , born October 10, 1876; died June 2, 1963.
305	ix.	<b>Minnie Schooler<sup>228</sup></b> , born March 04, 1878; died July 17, 1879.

---

Married: **(2) Ursula O. “Suley” Brittain** April 19, 1880 in Grundy County, Missouri.

---

Born: December 2, 1843

Died: November 8, 1907; buried Bethel Cemetery, Grundy County, Missouri.

---

### More About Milton E Schooler:

1864: Served in the Civil War – “Company A44 Missouri Infantry, State Militia Volunteers. Organized August and September 1864, mustered out at St. Louis August 15, 1865. Company A Washington Township.” From *Centennial History of Grundy County 1939*.

“As a result of a quarrel over the terms of rental, Millar Adams killed Milton Schooler, who had rented a farm from him, in July 1882. Adams was sentenced to two years in the penitentiary. The killing was done with a knife.” From *Grundy County, A History* by James Everett Ford, p. 196.

After his death, his children were scattered among relatives. Essie Louise lived with her grandparents, Joshua and Lucinda King, until her sister, Etta Bell, married Jasper Melton. She then lived with them for a time at Mt. Moriah, Harrison County, Missouri.

---

**194. Benjamin Harrison<sup>8</sup> Schooler** (Charles Harrison<sup>7</sup>, Benjamin Harrison<sup>6</sup>, William<sup>5</sup>, Benjamin Reason<sup>4</sup>, John<sup>3</sup>, Thomas<sup>2</sup>, William<sup>1</sup>)<sup>228</sup>

---

Born: November 21, 1852

Died: October 08, 1915

---

Married: **(1) Martha Jane Turck<sup>228</sup>**.

---

---

Married (2) **Lydia DeWitt**<sup>228</sup> February 04, 1872.

---

---

### Children

---

306	i.	<b>Bertha</b> <sup>9</sup> <b>Schooler</b> <sup>228</sup> .
307	ii.	<b>? Schooler</b> <sup>228</sup> , born 1876 in Worth County, Missouri; died 1876 in Worth County, Missouri. Stillborn.
308	iii.	<b>Jennie Pearle Schooler</b> <sup>228</sup> , born September 17, 1882; died 1968. She married <b>James Dye</b> in Spokane, Spokane County, Washington.
309	iv.	<b>Charles Weber Schooler</b> <sup>228</sup> , born May 11, 1884; died 1964 in Idaho. He married <b>Ethel Emma Fields</b> .
310	v.	<b>Frank Elvis Schooler</b> <sup>228</sup> , born March 24, 1886; died 1932 in Lewiston, Lewis County, Idaho. He married <b>Martha Whitman</b> .
311	vi.	<b>Philip Barber Schooler</b> <sup>228</sup> , born January 14, 1888; died 1969 in Idaho. He married <b>Kate McGee Vanderburg</b> .
312	vii.	<b>Hugh Albert Schooler</b> <sup>228</sup> , born March 23, 1890; died December 30, 1895.
313	viii.	<b>Harry Hubert Schooler</b> <sup>228</sup> , born November 18, 1892; died in Colfax, Whitman County, Washington. He married <b>Ella Nebelsieck</b> .
314	ix.	<b>Irvin John Schooler</b> <sup>228</sup> , born January 23, 1895; died July 30, 1918 in France.  <u>More About Irvin John Schooler:</u> It would appear that he died in World War I in France.
315	x.	<b>Ada May Schooler</b> <sup>228</sup> , born May 28, 1898. She married <b>Louis Steltz</b> .
316	xi.	<b>Ida Jane Schooler</b> <sup>228</sup> , born July 20, 1900. She married <b>Edward Pawley</b> .
317	xii.	<b>Benjamin Harrison Schooler</b> <sup>228</sup> , born January 07, 1902. He married <b>Vera ?</b> .

---

---

**196. J T<sup>8</sup> Schooler** (Evan Jones<sup>7</sup>, Benjamin Harrison<sup>6</sup>, William<sup>5</sup>, Benjamin Reason<sup>4</sup>, John<sup>3</sup>, Thomas<sup>2</sup>, William<sup>1</sup>)<sup>228</sup>

---

Born: September 05, 1844 in Logan County, Ohio

---

Married: **Sarah McMorran**<sup>228</sup> 1866.

---

---

### Children

---

318	i.	<b>Lizzie</b> <sup>9</sup> <b>Schooler</b> <sup>228</sup> .
319	ii.	<b>C M Schooler</b> <sup>228</sup> .

---

320	iii. <b>Evan T Schooler</b> <sup>228</sup> .
321	iv. <b>John Schooler</b> <sup>228</sup> .

---

**198. William Harrison<sup>8</sup> Schooler** (Harrison<sup>7</sup>, Benjamin Harrison<sup>6</sup>, William<sup>5</sup>, Benjamin Reason<sup>4</sup>, John<sup>3</sup>, Thomas<sup>2</sup>, William<sup>1</sup>)<sup>229</sup>

---

Born: December 17, 1842 in Bartholomew, Bartholomew County, Indiana

Died: October 09, 1907 in Hagerman, Lincoln County, Idaho; buried in Pioneer Cemetery, Hagerman, Gooding County, Idaho

---

Married: **Francis Ann Acton**<sup>229</sup> January 28, 1864 in Washington Township, Wapello, Iowa<sup>230</sup>, daughter of **John Acton** and **Elizabeth Myers**.

---

Born: August 09, 1844 in Washington Township, Wapello County, Iowa

Died: November 16, 1919 in Hagerman, Gooding County, Idaho<sup>231</sup>; buried in Pioneer Cemetery, Hagerman, Gooding County, Idaho

---

### Children

---

- |     |   |
|-----|---|
| 322 | i. <b>George E<sup>9</sup> Schooler</b> <sup>233</sup> , born August 09, 1865 in Boise, Ada County, Idaho; died September 03, 1871 in Wapello County, Iowa. |
|-----|---|
- 
- More About George E Schooler:  
1870: Appears in census, Washington Township, Wapello County, Iowa (pg 285).
- 
- |     |  |
|-----|--|
| 323 | ii. <b>John Richard Schooler</b> <sup>233</sup> , born January 01, 1869 in Boise, Ada County, Idaho; died January 16, 1929 in Hagerman, Gooding County, Idaho <sup>234</sup> ; buried January 17, 1929, Pioneer Cemetery, Hagerman, Gooding County, Idaho. He married <b>Henrietta "Etta" Lawrence</b> <sup>235</sup> July 03, 1893 in Toponis District, Idaho; born August 07, 1875 in Easton (now Uintah), Weber County, Utah; died May 30, 1948 in Sequim, Clallam County, Washington <sup>236</sup> ; buried in Pioneer Cemetery, Hagerman, Gooding County, Idaho. |
|-----|--|
- 

More About John Richard Schooler:

When John Richard Schooler was about 10-12 years old, he contracted spotted fever while on a freight trip with his father, coming from Kelton, Utah. They were west of the Hagerman Valley when he got sick. His father camped and they stayed there 16 days before they were able to move on. William heated tubs of water and soaked horse blankets in the hot water and then rolled John in the hot blankets. He also made sagebrush tea, which he made his son drink gallons of. He survived and lived about fifty years after this experience. He was kicked by a horse when about 18 and his hip was dislocated or broken. For the remainder of his life, he walked by lifting his leg with his hand for each step. (Elizabeth Schooler Watkins)

1870: Appears in census, Washington County, Wapello County, Iowa (pg 285).

1880: Appears in census, Ada County, Idaho Territory (pg 37).

1900: Appears in census, Lincoln County, Idaho (Malad precinct).

1910: Appears in census, Lincoln County, Idaho (Hagerman precinct).

1920: Appears in census, Gooding County, Idaho, living next door to his brother Wilbur (Hagerman precinct) (pg 43).

More About Henrietta Lawrence:

1910: Appears in census, Lincoln County, Idaho (Hagerman precinct).

1920: Appears in census, Gooding County, Idaho (Hagerman precinct) (pg 43).

- 
- |     |  |
|-----|--|
| 324 | iii. <b>William Franklin Schooler</b> <sup>237</sup> , born October 25, 1871 in Washington Township, Wapello County, Iowa; died February 17, 1873 in Wapello County, Iowa. |
|-----|--|
- 

- |     |   |
|-----|---|
| 325 | iv. <b>Minnie Ann Schooler</b> <sup>237</sup> , born April 13, 1875 in Austin, Travis County, Texas; died April 21, 1957 in Hagerman, Gooding County, Idaho <sup>238</sup> ; buried April 24, 1957, Pioneer Cemetery, Hagerman, Gooding County, Idaho. She married <b>Frederick Volney Conklin</b> <sup>239,240</sup> December 17, 1893 in Tapanis, Logan County, Idaho; born December 17, 1873 in Marshalltown, Marshall County, Iowa; died June 17, 1952 in Hagerman, Gooding County, Idaho; buried June 20, 1952, Pioneer Cemetery, Hagerman, Gooding County, Idaho. |
|-----|---|
- 

More About Minnie Ann Schooler:

1880: Appears in census, Ada County, Idaho Territory (pg 37).

1900: Appears in census, Lincoln County, Idaho (Malad precinct).

1910: Appears in census, Lincoln County, Idaho (Hagerman preinct) (pg 148).

1920: Appears in census, Gooding County, Idaho (Hagerman precinct) (pg 42).

More About Frederick Volney Conklin:

1910: Appears in census, Lincoln County, Idaho (Hagerman precinct) (pg 148).

1920: Appears in census, Gooding County, Idaho (Hagerman precinct) (pg 42).

- 
- |       |  |
|-------|--|
| + 326 | v. <b>Charles Wilbur Schooler</b> , born March 07, 1877 in Decatur, Wise County, Texas; died June 07, 1963 in La Grande, Union County, Oregon. |
|-------|--|
- 

- |     |  |
|-----|--|
| 327 | vi. <b>Hugh Edman "Edwin" Schooler</b> <sup>240</sup> , born October 05, 1879 in Boise, Ada County, Idaho; died June 21, 1923 in Buhl, Twin Falls County, Idaho <sup>241</sup> . He married <b>Mary Ann Durfee</b> <sup>242</sup> July 04, 1900 in Hagerman, Lincoln County, Idaho <sup>243</sup> ; born October 14, 1881 in Almo, Oassia County, Idaho; died October 25, 1952 in Colbran, Colorado. |
|-----|--|
- 

More About Hugh Edman Schooler:

Hugh was riding a horse that bucked him into a clothes line and he was hit in the neck very hard. Later he developed cancer in the same part of his throat and died from it.

1880: Appears in census, Ada County, Idaho Territory (pg 37).

1900: Appears in census, Lincoln County, Idaho, living with his cousin (Malad precinct).

1910: Appears in census, Buhl, Twin Falls County, Idaho (pg 6B).

1920: Appears in census, Buhl, Twin Falls County, Idaho.

More About Mary Ann Durfee:

1910: Appears in census, Buhl, Twin Falls County, Idaho (pg 6B).

1920: Appears in census, Buhl, Twin Falls County, Idaho.

- 
- |     |  |
|-----|--|
| 328 | vii. <b>Harry Lamont "Lemon" Schooler</b> <sup>244</sup> , born August 02, 1884 in Shoshone, Lincoln County, Idaho; died May 30, 1894 in Hagerman, Gooding County, Idaho; buried in Pioneer Cemetery, Hagerman, Gooding County, Idaho. |
|-----|--|
- 

- |     |  |
|-----|--|
| 329 | viii. <b>Jesse Grant Schooler</b> <sup>244</sup> , born July 16, 1887 in Bigwood River, Alturas County, Idaho; died July 17, 1958 in LaGrande, Union County, Oregon; buried in Hagerman, Gooding County, Idaho. He |
|-----|--|

married **Eugenia Lizette Cook**<sup>244</sup> January 17, 1906 in Hagerman, Lincoln County, Idaho; born 1890 in Sevier County, Utah; died 1941; buried in Pioneer Cemetery, Hagerman, Gooding County, Idaho.

---

More About Jesse Grant Schooler:

Jesse was kicked in the hip by a horse in the early 1950s and was crippled for the rest of his life. He was in La Grande, Oregon in 1958 visiting his brother Wilbur, when he passed away on a downtown street.

1900: Appears in census, Lincoln County Idaho (Malad precinct).

1920: Appears in census, Buhl, Twin Falls County, Idaho.

More About Eugenia Lizette Cook:

Applied for a brand March 1, 1915 in Buhl, Twin Falls, Idaho, according to the Idaho State Brand Records.

1920: Appears in census, Buhl, Twin Falls County, Idaho.

---

**Francis Ann Acton** married (2) **Peter Hanks**<sup>229A</sup> 1909; born 1843 in Ohio.

More About Peter Hanks and Francis Acton:

Francis' second husband, Peter Hanks, was a member of a family she had known in Agency, Iowa when she was young. His father and grandfather were also neighbors to the Schoolers in Logan County, Ohio. His aunt married a Schooler and may have been related to Frances' mother-in-law, Mary Dillon. (Elizabeth Schooler Watkins)

Notes for William Harrison Schooler:

William Harrison Schooler left Iowa with a group of men and went to the California gold fields. When he left, his sweetheart, Frances Ann Acton, made a little pincushion for him to take with him as a remembrance. While in California he had a ring made for her from a gold nugget. He made a tiny cut in the back of the pincushion and inserted the ring for safekeeping. The pincushion is in the possession of Wilbur Schooler's family. On leaving the gold fields of California the group of eight men from Iowa (the Iowa Regiment?) traveled north to Oregon and through the Blue Mountains. One man broke his leg, and winter overtook them, so they camped on the east slope of the mountains in the Grande Ronde Valley. A farm lady who lived near where they camped liked the men and she and her husband really enjoyed the stories they told of their travels, so later, after the men had left the next spring, in 1863, she donated land for a school to be built and named it the "Iowa School". The school was built on what is now the intersection of Hunter's Lane and Stanley Lane down at the bottom of the slope of the foothills between the settlement of Mt. Glen and Mt. Emily Peak. Rhea Beddes Schooler, wife of Charles William Schooler, son of Wilbur, attended this school between 1920-22. It had one room, a cloak room and an entrance way. The building was square and white. In about 1986 the old school was picked up and was moved to the the Union County Fairgrounds at the edge of La Grande as a display. The Iowa men traveled by fall to Fort Hall. A Mr. McGee at Fort Hall stopped them because of a Sioux uprising. Indians that winter had suffered an epidemic of small pox that killed off a lot of them. Eventually the travelers made it back to Iowa. Following is the explanation given by Wilbur Schooler: "At Greenriver going to California a feller had a small family and was Indian excited. He swore he would kill the first Indian he saw. So he shot an Indian squaw, who was sitting on a log. A large group of Indians took him and staked him out until ants ate him. His wife and baby went on to California with the wagon train." I'm not really sure about this story. It was told in his later years and doesn't fit in too well. William and Frances married and then moved to Idaho with his family about 1863-65, where they had two sons born in Boise District. In the 1870 census in Boise District, Ada County, Harrison and Mary were there, and Richard and Mary and their family, but not William and Frances. They were back in Wapello County, Iowa, with Frances's parents, John Acton and his second wife, Frances McDivitt Acton. What problems they encountered in Idaho we do not know, but they were enough to journey all the way back to Iowa. While they were living there they had another son; however, they buried him there in 1873. The family now moved to Austin, Texas to rejoin William's

family who went there from Idaho. While there they had another child, then moved to Decatur, Wise County, Texas and had another child before leaving Texas for good. About 1879 they moved back to Idaho with his parents, Harrison and Mary, and his brother Richard and his family. When they first came back they settled on what is now known as Gridley Island in the Hagerman area. They only stayed there about one year. This island is located down from Thousand Springs where the bridge now is. They also lived one summer about 1880 near the road going to Camas prairie. The little creek where they were is still called Schooler Creek. They cut and baled hay on the Camas prairie and hauled it down to where the railroad was being built. They had a homemade baler, which was made out of logs that compressed the hay, so they could tie ropes around it. From there they went up on Big Wood River near where the town of Gooding now is, where their last child was born. In those days they worked at anything they could to make a living. They worked on railroad grades, hauled freight, ran horses and cattle, worked on canals, broke horses for working and for riding, put up hay, irrigated; anything to make a dollar. About 1890, they moved west of Hagerman and built a little house where they lived from then on. About 1905 William and Francis's sons and son-in-law got together and built on to their parents' home. None of them had much money, so they all went north to cut lodge pole logs to build with. This house was still standing until sometime in the 1960s.

William's father, Harrison, and brother Richard purchased the "Fallis (Fales) Ranch" at Toponis, Logan County, (Logan County was made from Alterus County but both counties were discontinued when Lincoln county was organized) on the Big Wood River. They returned to running freight again, from Kelton, Utah to Boise, until the railroad was finished in 1882. Then they continued all over southern Idaho, even from Shoshone to Twin Falls when Twin was building until 1905 when the railroad came in there. After that, they hauled from Gooding to Wendell and from Bliss to Hagerman. They brought in the printing press for the Hagerman Sun, letting it down over the rim, with blocks and tackle on the the Justice grade. The anchors can still be seen there. In later years William, Richard, and their father Harrison purchased an enclosed wagon with fine teams and began the "Schooler's Gramophone and Sciopticon Company" which had the name decoratively written on the sides of the wagon. (See above, "Sciopticon or Magic Lantern - Slide Projector".) They also moved freight from Boise to Silver City, Hagerman, and to Kelton, Utah with a 24 jerk line string. They brought in the lumber to help build Twin Falls, Buhl, Mountain Home, and the Malad Dam. They freighted in the first frame building in Boise and the first horse powered thrashing machine in Boise from Kelton. When Wilbur Schooler was a young man he worked for his Uncle Richard breaking horses, I assume for the freighting company. Richard with his three teams hitched together could come from the railroad in 18 days, one six horse team, one 10 horse team, and one 12 horse team. Loaded they pulled 30,000 pounds of freight. Later about 1905 Wilbur, Jess and two of Wilbur's brothers-in-law, Tom and Joel Campbell, helped build the railroad Blue Lakes grade from Twin Falls to Buhl. They also helped make the Big Ben Irrigation Canal. After they finished freighting, they sold all but two wagon wheelers leaders - pointers Tommy, jerk line horses, a buckskin with black markings, Mate was a Hank Shaelom sorrel and Jack was a dark bay. In 1900 Harrison was living with his son William, age 87, probably while Francis was in Denver being treated for skin cancer the first time. Harrison died of a ruptured appendix. The black wrought iron fence that is partially around the Pioneer Cemetery in Hagerman is the fence the Schoolers built around the area of the Schooler plots there, but it was moved to the outer edge of the Cemetery later by Dick Cook. (Elizabeth Schooler Watkins)

#### More About William Harrison Schooler:

William's estate was dated May 29, 1909, administered by Frances Ann Hanks, his widow. The Pioneer Cemetery is located toward the north end of the Hagerman valley, about one mile west of the highway. (Salmon Tract Cemetery records and estate records in the Lincoln County Courthouse in Shoshone, Idaho.)

1856: Appears in Iowa State Census, Agency, Wapello County, Iowa, Agency; it says he had been living in the state for 10 years (pg 13).

1860: Appears in census, Washington Township, Wapello County, Iowa; his future wife and her family were living 6 houses away (pg 163).

1870: Appears in census, Washington Township, Wapello County, Iowa; they were living with his wife's

parents.

1880: Appears in census, Ada County, Idaho (pg 37)

1900: Appears in census, Lincoln County, Idaho (Malad precinct)

More About Francis Ann Acton:

She died of skin cancer.

1850: Appears in census, Wapello County, Iowa (pg 409)

1860: Appears in census, Washington Township, Wapello County, Iowa; her future husband and his family living 6 houses away (pg 163).

1870: Appears in census, Washington Township, Wapello County, Iowa; they are living with her father (pg 285).

1880: Appears in census, Ada County, Idaho (pg 37).

1900: Appears in census, Lincoln County, Idaho (Malad precinct).

1910: Appears in census, Lincoln County, Idaho (pg 154).



## Schoolers of the American Northwest

### *Descendants of Benjamin Harrison Schooler*

*Generation No. 9*

---

**256. Laura Josephine<sup>9</sup> Schooler** (John Elbert<sup>8</sup>, William<sup>7</sup>, Benjamin Harrison<sup>6</sup>, William<sup>5</sup>, Benjamin Reason<sup>4</sup>, John<sup>3</sup>, Thomas<sup>2</sup>, William<sup>1</sup>)<sup>267</sup>

---

Born: March 28, 1859

---

Married **George Porter<sup>267</sup>**.

---

---

#### Children

---

348      i.   **Harry<sup>10</sup> Porter<sup>267</sup>**.

---

349      ii.   **George Porter<sup>267</sup>**.

---

---

**257. Harrison Clay<sup>9</sup> Schooler** (John Elbert<sup>8</sup>, William<sup>7</sup>, Benjamin Harrison<sup>6</sup>, William<sup>5</sup>, Benjamin Reason<sup>4</sup>, John<sup>3</sup>, Thomas<sup>2</sup>, William<sup>1</sup>)<sup>267</sup>

---

Born: May 02, 1861

---

Married: **Rose ?<sup>267</sup>**.

---

---

#### Child

---

350      i.   **Norris<sup>10</sup> Schooler<sup>267</sup>**.

---

---

**259. Carrie Belle<sup>9</sup> Schooler** (John Elbert<sup>8</sup>, William<sup>7</sup>, Benjamin Harrison<sup>6</sup>, William<sup>5</sup>, Benjamin Reason<sup>4</sup>, John<sup>3</sup>, Thomas<sup>2</sup>, William<sup>1</sup>)<sup>267</sup>

---

Born: August 03, 1866.

---

Married **William Workman<sup>267</sup>**.

---

---

**Children**

---

351      i.   **William<sup>10</sup> Workman<sup>267</sup>**.

---

352      ii.   **Anna Workman<sup>267</sup>**.

---

353      iii.   **Helen Workman<sup>267</sup>**.

---

---

**262. Jessie Mildred<sup>9</sup> Schooler** (John Elbert<sup>8</sup>, William<sup>7</sup>, Benjamin Harrison<sup>6</sup>, William<sup>5</sup>, Benjamin Reason<sup>4</sup>, John<sup>3</sup>, Thomas<sup>2</sup>, William<sup>1</sup>)<sup>267</sup>

---

Born: December 13, 1874.

---

Married **Herman Danz<sup>267</sup>**.

---

---

**Child**

---

354      i.   **Jim<sup>10</sup> Danz<sup>267</sup>**.

---

---

**263. Effie Mildred<sup>9</sup> Schooler** (John Elbert<sup>8</sup>, William<sup>7</sup>, Benjamin Harrison<sup>6</sup>, William<sup>5</sup>, Benjamin Reason<sup>4</sup>, John<sup>3</sup>, Thomas<sup>2</sup>, William<sup>1</sup>)<sup>267</sup>

---

Born: December 13, 1874

---

Married **Warren Matter<sup>267</sup>**.

---

---

**Children**

---

355      i.   **Helen<sup>10</sup> Matter<sup>267</sup>**.

---

356      ii.   **Walter Matter<sup>267</sup>**.

---

357      iii.   **Dorothy Matter<sup>267</sup>**.

---

358      iv.   **Jess Matter<sup>267</sup>**.

---

359      v.   **Anna Matter<sup>267</sup>**.

---

360      vi.   **Thurman Matter<sup>267</sup>**.

---

361      vii.   **Elva Matter<sup>267</sup>**.

---

362      viii.   **Hope Matter<sup>267</sup>**.

---

---

**326. Charles Wilbur<sup>9</sup> Schooler** (William Harrison<sup>8</sup>, Harrison<sup>7</sup>, Benjamin Harrison<sup>6</sup>, William<sup>5</sup>, Benjamin Reason<sup>4</sup>, John<sup>3</sup>, Thomas<sup>2</sup>, William<sup>1</sup>)<sup>268</sup>

---

Born: March 07, 1877 in Decatur, Wise County, Texas

Died: June 07, 1963 in La Grande, Union County, Oregon

---

Married: **Rosetta Ann Campbell**<sup>268</sup> November 10, 1903 in Hagerman, Lincoln County, Idaho<sup>269</sup> by A. N. Conklin, Justice of the Peace, Malad precinct.

---

Born: March 04, 1881 in Grand Junction, Mesa County, Colorado<sup>270</sup>

Died: February 13, 1969 in La Grande, Union County, Oregon<sup>271</sup>.

---

### Children

---

- 363      i. **Sonora Grace<sup>10</sup> Schooler<sup>273</sup>**, born September 15, 1904 in Hagerman, Lincoln County, Idaho; died January 19, 1905 in Hagerman, Lincoln County, Idaho<sup>274</sup>; Stepchild.
- 

More About Sonora Grace Schooler:

Died of pneumonia, buried January 20, 1905, I.O.O.F. Cemetery, Lincoln County, Idaho.

---

- 364      ii. **Charles William Schooler<sup>275</sup>**, born November 10, 1905 in Hagerman, Lincoln County, Idaho; died March 23, 1973 in La Grande, Union County, Oregon; buried March 29, 1973, La Grande, Union, Oregon. He married (1) **Francis Florence "Tiny" Goyen<sup>275</sup>** November 11, 1928 in La Grande, Union County, Oregon; born November 12, 1910 in Elgin, Union County, Oregon; died January 07, 1934 in La Grande, Union County, Oregon; buried January 10, 1934, Elgin, Union County, Oregon. He married (2) **Rhea Priscilla Beddes<sup>275</sup>** February 25, 1937 in Walla Walla, Walla Walla County, Washington; born January 23, 1914 in LaGrande, Union County, Oregon; died March 23, 1991 in LaGrande, Union County, Oregon; buried March 30, 1991, Hillcrest Cemetery, La Grande, Union County, Oregon.
- 

More About Charles William Schooler:

Charles spent his boyhood days in southern Idaho. He often told stories about the little brick school house and his boyhood pranks. He was very proud of his first job, busting broncs. Charles was very talented in music and could play any string instrument and often did. Later he learned to play the electric organ and played it daily. Yet he never had a music lesson in his life; this was a natural talent. During his early adult life he often played for dances with his family. He told of how he took a wooden bedstead and made a guitar out of it. He traded this for the automobile that he drove to Oregon. In 1924, when he was 19 years old, he came to Oregon. In 1934 he and his first wife were in a fatal auto accident and he was left with a young daughter to raise. He went to work for the railroad as a fireman and later became an engineer. He enjoyed his work very much and was proud to be part of the engine service. Charles had many interests and was a self-educated man. He enjoyed carpentry work, mechanics, wiring, repairing sewing machines, painting, and well drilling. (Elizabeth Schooler Watkins)

1910: Appears in census, Lincoln County, Idaho (Hagerman precinct).

1920: Appears in census, Gooding County, Idaho, Hagerman (pg 43).

1924: Moved to Oregon.

More About Francis Florence Goyen:

Died in an auto accident.

More About Rhea Priscilla Beddes:

She attended the Iowa School which was built and named for the Schooler men who spent one

winter stranded in the Grande Ronde Valley circa 1870. (See notes on William Harrison Schooler born December 17, 1842.) She grew up in the Mt. Glen and La Grande area.

When Rhea married Charles, she had two children and he had one from previous marriages, “they were so young that the family easily became one big family and the ones born later just fit in fine”.

- 
- 365      iii. **Wilbur Schooler**<sup>275</sup>, born February 27, 1908 in Hagerman, Lincoln County, Idaho; died February 27, 1908 in Hagerman, Lincoln County, Idaho.
- 

- 366      iv. **Wanda Rosanna Schooler**<sup>275</sup>, born July 14, 1910 in Hagerman, Lincoln County, Idaho; died December 25, 1992 in La Grande, Union County, Oregon; buried 1993, La Grande, Union, Oregon. She married (1) **Golden Elias Winn**<sup>275</sup> March 09, 1928 in Hagerman, Gooding County, Idaho; born February 19, 1908 in Vernal, Unitah County, Utah; died July 30, 1980 in Edmonds, Snohomish County, Washington<sup>276</sup>. She married (2) **Roy Eugene Hogue**<sup>277</sup> July 07, 1933 in Pendleton, Umatilla County, Oregon; born December 24, 1906 in Nampa, Canyon County, Idaho; died December 13, 1997 in Island City, Union County, Oregon; buried December 16, 1997, Hillcrest Cemetery, La Grande, Union County, Oregon.
- 

More About Wanda Rosanna Schooler:

Wanda loved music like the rest of her family and played the organ in the band the family had when she was a young woman. She lived a simple life, but had a very beautiful antique organ that always had a place of honor in her home. For quite a few years, her parents lived next door to her family, until they were no longer able to live in their own home and moved in with Charles and his family. Wanda always enjoyed going fishing with her husband, Roy, and was also very talented at needlework. (Elizabeth Schooler Watkins)

1910: Appears in census, Lincoln County, Idaho (Hagerman precinct).

1920: Appears in census, Gooding County, Idaho, Hagerman (pg 43).

Wanda died of Parkinson's disease.

More About Roy Eugene Hogue:

Roy's family moved to La Grande in 1909. When he met Wanda, she had two small sons, who became his sons when they married. He always loved fishing and being outdoors. He worked for the City of La Grande for years only retiring when he was injured on the job and no longer able to work. (Elizabeth Schooler Watkins)

---

- 367      v. **Thomas Edward Schooler**<sup>277</sup>, born March 19, 1912 in Hagerman, Lincoln County, Idaho; died May 30, 1929 in La Grande, Union County, Oregon; buried June 02, 1929, Hillcrest Cemetery, La Grande, Union County, Oregon.
- 

More About Thomas Edward Schooler:

1920: Appears in census, Gooding County, Idaho, Hagerman (pg 43).

Thomas was killed in a tragic accident at the age of seventeen. He was thrown from his horse and trampled to death by his brother Johnny's horse, while most of his family was there looking on.

---

- 368      vi. **John Grant Schooler**<sup>277</sup>, born February 02, 1914 in Hagerman, Gooding County, Idaho; died February 26, 1976 in LaGrande, Union County, Oregon<sup>278</sup>. He married **Dortha Letha Byers**<sup>279</sup>.
- 

More About John Grant Schooler:

1920: Appears in census, Gooding County, Idaho, Hagerman (pg 43).

Johnny enjoyed music also and I understand was quite a dancer in his youth. He had kind of a hard life, but in his later years he solved some of his problems and seemed to enjoy life much more. I remember him living with us for a few months when I was a young teenager and I really appreciated getting to know him better. One of my favorite memories is how surprised we were to come home from school one day to find that he and our mother had torn a wall out between the front hall and living room of our home. (Elizabeth Schooler Watkins)

---

- 369      vii.    **Violet Schooler**<sup>279</sup>, born August 1915 in Hagerman, Gooding County, Idaho; died August 1915 in Hagerman, Gooding County, Idaho.
- 
- + 370      viii.   **Joseph Lester Schooler**, born October 09, 1919 in Hagerman, Gooding County, Idaho; died November 13, 1986 in Yakima, Yakima County, Washington.
- 

- 371      ix.    **Henrietta Schooler**<sup>279</sup>, born May 11, 1922 in Hagerman, Gooding County, Idaho; died December 1922 in Hagerman, Gooding County, Idaho.
- 

- 372      x.    **Marie Etta “Mary” Schooler**<sup>279</sup>, born May 11, 1922 in Hagerman, Gooding County, Idaho; died August 31, 1995 in Santa Maria, Santa Barbara County, California; buried September 05, 1995, Santa Maria Cemetery, Santa Maria, Santa Barbara County, California. She married (1) **Leslie E Shirley**<sup>279</sup>. She married (2) **Ralph Vetch Rundell**<sup>279</sup> October 19, 1946; born March 12, 1917 in Oklahoma; died April 17, 1996 in Nipomo, San Luis Obispo County, California; buried in Santa Maria Cemetery, Santa Maria, Santa Barbara County, California.
- 

More About Marie Etta Schooler:

Mary was a twin, but her twin sister only lived about 8 or 9 months. She was quite young when her father moved the family from Hagerman, Idaho to La Grande, Oregon. Mary had the family talent for music and had a wonderful singing voice. She was also a talented artist and I remember her trying to teach me how to draw simple pictures, but she didn't have much luck. (I don't have much talent in that area.) She had health problems and had surgery a great many times in her life. (Elizabeth Schooler Watkins)

More About Ralph Vetch Rundell:

When Ralph and Mary got married, she had two very young daughters that he helped her raise. They loved him as the only father they knew. He worked for construction companies, so they moved around the Northwest quite a lot in their married life, living in Oregon, Washington and finally settling in California for their retirement. (Elizabeth Schooler Watkins)

---

- 373      xi.    **Norma Schooler**<sup>279</sup>, born June 27, 1925 in Hagerman, Gooding County, Idaho; died June 27, 1925 in Hagerman, Gooding County, Idaho<sup>280</sup>.
- 

- 374      xii.   **Orma Schooler**<sup>281</sup>, born June 27, 1925. She married **Max Winfield Legore**<sup>281</sup>; born July 05, 1920 in Gardena, Oregon; died September 29, 1991 in La Grande, Union County, Oregon<sup>282</sup>; buried October 02, 1991, Summerville Cemetery, Summerville, Union County, Oregon.
- 

More About Max Winfield Legore:

Between 1942 – 1945: Served in the US Army, World War II, China-Burma-India Theatre.

Max was quite good at remodeling homes; in fact they lived in very few homes that they didn't remodel. It was not unusual to stop by to visit them and find him up on the roof. The problem was, you had to be very careful where you stood around the edges of the house, because he was known to sometimes fall off the roof. (Elizabeth Schooler Watkins)

---

More About Charles Wilbur Schooler:

Wilbur was a cowboy all his life. Even after he was too old to do the work, he looked the part. He started his life work very young, breaking horses for his Uncle Richard. He said he used to break 25-30 horses a winter, mainly for the freight line. He also worked for “Morris and Knudeson”, which was at the time a new company. After he was married, Rosetta made a denim skirt for him to wear so that he could break horses for ladies to ride. He also helped in the driving of the freight teams and sometime after 1903, Wilbur and Jesse Schooler and Tom and Joel Campbell helped build the railroad grade from Bliss to Hagerman and from Hagerman to Twin Falls. They built a baler of logs and bales tied with ropes, to supply wild hay for the horses used in building the railroad grade. They brought in the first printing press to the Hagerman valley by lowering it over a rock wall on the Justice Grade. Iron hooks and spikes can still be seen on top of the rim. They lowered runners and generators in when the lower Salmon power plant was constructed, and they also helped to make the Big Ben irrigation canal. Frank Boyer had the first threshing machine in Hagerman and one time when Wilbur was working for him, he fell into the thresher, but was rescued in time for no harm to be done. In 1958, when in Hagerman for the funeral of Jesse

Schooler, Joe, the last son of Wilbur and Rosie, found the remains of the old rock barn that Wilbur had built on their place years before. Wilbur and Rosie had a family band that played for dances in Hagerman. Wilbur would call square dances and play the fiddle, and was quite a dancer himself. About 1961 Elmer Cook came to visit Wilbur and Rosie in La Grande for the last time and they showed us some of their fancy dance steps and really did a good job for two “old geezers” as they called themselves. In 1928 Wilbur built what he called the first mobile home to move his family to La Grande, Oregon. He built or bought a small long narrow building and placed it on a flat bed wagon and made a temporary home out of it. He cut a window in the front, so that he could see to drive the horses, and drove it over unpaved roads that sometimes had very steep sides and no safety rails. At night Rosie, Mary and Orma would sleep in the wagon and Wilbur, Thomas, Johnny, and Joe would sleep on the ground to keep the fire going. They left Hagerman, because Chuck and Wanda had each married and ended up living in La Grande. They went back to breaking horses and training them and Thomas was thrown from his horse and trampled to death by Johnny’s horse. In the 1950s Wilbur and Rosie, Chuck and Rhea, Roy and Wanda, and Joe and Lila all lived within a four or five block area and almost had a little Schooler community. As children, the grandchildren really enjoyed being able to go to their Grandpa and Grandma’s little house to visit or spend the night. It was very, very small and they didn’t have much. But the love overflowed. They had climbing roses covering the front screened porch and many more roses in the garden beside the house. (Elizabeth Schooler Watkins)

1900: Appears in census, Lincoln County, Idaho (Malad precinct)

1920: Appears in census, Gooding County, Idaho (Hagerman precinct)

More About Rosetta Ann Campbell:

Rosetta was raised in a strong LDS [Latter Day Saints, i.e., Mormon] family and had been warned with the other young girls about that wild Wilbur Schooler, but she was interested anyway. While she and her family were attending church in the school house, Wilbur and his friends would just as likely be outside riding around the building and shooting at the stove pipe. Needless to say, she married him anyway. She never did quite tame him. They raised a good, large family, with a strong love of music. Whenever we got together we sang and all the instruments were played for everyone’s enjoyment. Rosetta loved to sing and loved to hear her grandchildren sing for her. Rosetta was also talented at handiwork and was still entering crocheted items in the fair and winning ribbons when she was in her 70s. Rosie had rheumatoid arthritis and in her later years had a hard time getting around, but she loved to sit and work on jigsaw puzzles and would pass them around to the rest of the family before doing them a second time. (Elizabeth Schooler Watkins)

1910: Appears in census, Lincoln County, Idaho (Hagerman precinct).

1920: Appears in census, Gooding County, Idaho, Hagerman (pg 43).

# Schoolers of the American Northwest

## *Descendants of Benjamin Harrison Schooler*

*Generation No. 10*

---

**370. Joseph Lester<sup>10</sup> Schooler** (Charles Wilbur<sup>9</sup>, William Harrison<sup>8</sup>, Harrison<sup>7</sup>, Benjamin Harrison<sup>6</sup>, William<sup>5</sup>, Benjamin Reason<sup>4</sup>, John<sup>3</sup>, Thomas<sup>2</sup>, William<sup>1</sup>)<sup>316</sup>

---

Born: October 09, 1919 in Hagerman, Gooding County, Idaho<sup>317</sup>

Died: November 13, 1986 in Yakima, Yakima County, Washington<sup>318</sup>; buried in Terrace Heights Cemetery, Yakima, Yakima County, Washington

---

Married: **Lila Leona Lewis<sup>319</sup>** August 22, 1942 in Weiser, Washington County, Idaho.

---

Born: April 16, 1923 in North Bend, Coos County, Oregon

Died: March 19, 1987 in Yakima, Yakima County, Washington<sup>320</sup>; buried in Terrace Heights Cemetery, Yakima, Yakima County, Washington

---

### Children

---

+ 402 i. **Elizabeth Annette<sup>11</sup> Schooler**, born October 4, 1943.

---

403 ii. **Sharon Lee Schooler<sup>321</sup>**. She married **Dennis Lee Snider<sup>321</sup>**.

---

404 iii. **Selby Ray Schooler<sup>321</sup>**.

---

405 iv. **Oren Joe Schooler<sup>321</sup>**, born September 29, 1948 in La Grande, Union County, Oregon; died February 23, 1969 in Fort Bliss, El Paso, Texas; buried in Terrace Heights Cemetery, Yakima, Yakima County, Washington.

---

#### More About Oren Joe Schooler:

Oren was born 5 days before my 5th birthday, so I always considered him as a birthday present. He was born without a roof in his mouth and had trouble talking for the first few years of his life. That made school very hard for him all of his life. But if you gave him something to do with his hands or asked him to sing or play an instrument he would excel. His senior year in high school, I had just returned home to La Grande, Oregon from the Navy, when our father was given the opportunity for a great career advancement in Yakima, Washington. They felt it would be very difficult for him to change schools four months before graduation, so we found an apartment together and I helped him finish that last four months of school. Shortly after graduating, he went into the service. (Elizabeth Schooler Watkins)

He served in the U.S. Army from 1966 to 1969, when he was killed in a car wreck.

---

#### More About Joseph Lester Schooler:

Joe was born on the homestead that his father Wilbur proved up just before he was married. He was 9 years old when they left Hagerman. The team of horses that pulled their "mobile home" were called Paddy and Rowdy. Joe was helping around the camp and went to help with the horses when, unthinking, he walked in back of Rowdy. The horse kicked and hit Joe in both knees. He was hurt pretty badly, but his mother kept hot packs on him everyday and soon he was walking again. About a year later, he had an appendicitis attack that required surgery. His wound abscessed and he almost died from it. He was left with

a bad scar that sunk into his side almost three inches. He was so weak that he had to stay in bed for a long time, and ended up never going back to school, until later in his life when he attended many mechanical training schools through the years. Joe was a musician all of his life. His family played for dances when he was very young and he started in at the age of four, playing the organ sitting on his sister Wanda's lap, so she could pump the organ for him while he played. Later in life, he started forming his own groups and played for dances for many years. He was a mechanic by trade and held a variety of jobs in that profession. But he also worked on the railroad for a while and drove truck for a while. Joe and Lila met when he was driving truck for her Uncle Theo Gregory and she was living with them while going to Business School. The day Joe received his draft notice they eloped to Weiser, Idaho so they could be married before he left. They took his sister Mary and Max LeGore along as witnesses. They drove Max's car and on the way home hit a cow. The cow got up and walked away, but they totaled the car. Lila was able to travel to three training camps with Joe - Merced, California, Reno, Nevada, and Augusta, Georgia - before he received his orders that he was being shipped overseas. They took the bus back to La Grande and then he went back to his Company. The day he sailed out of New York Harbor, on his way to the British Isles, their first child, Elizabeth was born. She was a month old before he even knew she had been born and was two years old before he saw her for the first time. He never talked much about his experiences in the Army Air Corps. We do know that he landed on the beaches of Normandy on D-Day in a glider and was one of the few survivors of the ordeal. In later years I saw the movie Battle of the Bulge and wondering how accurate it was, I asked him if he knew much about it. He told me that he knew more about it than he ever had wanted to; he was there. Joe was a bit older than the average soldier so was a sergeant by the time he was in France. He drove a truck load of men and one day they spent most of the day wandering around lost. Eventually they came across a farm and stopped to ask directions from the farmer. In talking to him, they found that they had spent most of the day behind German lines. Near the end of the war when they were involved in mop-up, they pulled in to the edge of a small village in Germany and Joe stopped the truck, got out and pulled down the name sign. He said after all the time they had been there, he didn't want the guys in his truck to know they were entering a village named Schooler. About 1959 Joe went to work for Inland Machinery, a Caterpillar dealership, as a mechanic. The company eventually sold out in La Grande and moved to Yakima, Washington, so Joe and Lila moved with them. Later moves took them to Pendleton, and Umatilla, Oregon before moving back to Yakima in 1985. (Elizabeth Schooler Watkins)

Joe died of an aorta aneurism.

1920: Appears in census, Gooding County, Idaho (Hagerman) (pg 43).

#### More About Lila Leona Lewis:

Lila was attending Business College in La Grande, Oregon and living with her aunt and uncle, Sylvia and Theo Gregory, when she met Joe who was driving truck for them. She was a very loving mother who always had time for her children and grandchildren. She made sure that her daughters learned to cook, sew, preserve foods, and all the things that are necessary to raise a family. It was only in later years that she admitted that she really didn't enjoy cooking much herself. You would never have known it from eating a meal at her table. I will never forget when she, her two sisters and their mother all learned to drive at the same time, when I was about nine years old, using the car that belonged to her brother, Virgil. We as kids really thought it was funny watching them trying to practice parallel parking between logging trucks, or whatever other equipment might be parked in her father's yard at the time. She made no pretense about having a singing voice, but loved music and was always supportive of her musical husband and children. She attended every one of our concerts and all of his dances. She had many other talents that filled her time, needlework, bowling, and gardening among them. When we were young, she had a vegetable garden the size of a city lot. (Elizabeth Schooler Watkins)

Lila died of ovarian cancer.



## Schoolers of the American Northwest

### *Descendants of Benjamin Harrison Schooler*

*Generation No. 11*

---

**402. Elizabeth Annette<sup>11</sup> Schooler** (Joseph Lester<sup>10</sup>, Charles Wilbur<sup>9</sup>, William Harrison<sup>8</sup>, Harrison<sup>7</sup>, Benjamin Harrison<sup>6</sup>, William<sup>5</sup>, Benjamin Reason<sup>4</sup>, John<sup>3</sup>, Thomas<sup>2</sup>, William<sup>1</sup>)<sup>336</sup>.  
Born: October 4, 1943

---

Married **Lynn Keith Watkins<sup>336</sup>**, son of **Laurence Watkins** and **Marion Lathim**.

---

---

#### Children

---

421      i.   **Margo Elizabeth<sup>12</sup> Watkins<sup>336</sup>**.

---

422      ii.   **Jennifer Leona Watkins<sup>336</sup>**.

---

423      iii.   **Teresa Margaret Watkins<sup>336</sup>**.

---

424      iv.   **Marianne Aletha Watkins<sup>336</sup>**.

---

More About Elizabeth Annette Schooler:

Preparer of Schooler genealogy at <http://www.geocities.com/Heartland/Farm/6582/>

## Endnotes

158. Elizabeth Annette Schooler Watkins, *Schooler Family Web Page*, "Electronic."
159. *Marriage Records - Logan County, Ohio*, FHC #534836.
160. Elizabeth Annette Schooler Watkins, *Schooler Family Web Page*, "Electronic."
161. *Marriage Records - Logan County, Ohio*, FHC #534836.
162. Dorothy King, *Dorothy King letters*.
163. Elizabeth Annette Schooler Watkins, *Schooler Family Web Page*, "Electronic."
164. *Cemetery Records - Mercer County, Missouri*.
165. Dorothy King, *Dorothy King letters*.
166. Elizabeth Annette Schooler Watkins, *Schooler Family Web Page*, "Electronic."
167. *Marriage application for license*, August 06, 1829.
168. Elizabeth Annette Schooler Watkins, *Schooler Family Web Page*, "Electronic."
169. *Marriage application for license*, August 06, 1829.
170. Dorothy King, *Dorothy King letters*.
171. Elizabeth Annette Schooler Watkins, *Schooler Family Web Page*, "Electronic."
172. *Schooler Family Bible - Graham*.
173. Elizabeth Annette Schooler Watkins, *Schooler Family Web Page*, "Electronic."
174. *Marriage Records - Logan County, Ohio*, p. 108.
175. *Schooler Family Bible*.
176. "Shoshone Journal," Obituary lists Mary's date and place of birth and states that she had four children, three of whom are living, eighteen grandchildren, and 5 great grandchildren.
177. *Marriage Records - Logan County, Ohio*, p. 108.
178. Elizabeth Annette Schooler Watkins, *Schooler Family Web Page*, "Electronic."
179. "Shoshone Journal," Obituary, Lists his birth date and death date. It states that he came to Idaho in 1862.
180. Elizabeth Annette Schooler Watkins, *Schooler Family Web Page*, "Electronic."
181. *Marriage Records - Logan County, Ohio*.
182. Elizabeth Annette Schooler Watkins, *Schooler Family Web Page*, "Electronic."
183. *Marriage Records - Wapello County, Iowa*.
184. *Marriage Records - Logan County, Ohio*.
185. *Marriage Records - Wapello County, Iowa*.
186. Elizabeth Annette Schooler Watkins, *Schooler Family Web Page*, "Electronic."
187. *Ada County, Idaho Marriages*.
188. *Cemetery Records*.
189. *Ada County, Idaho Marriages*.
190. Elizabeth Annette Schooler Watkins, *Schooler Family Web Page*, "Electronic."
191. *Cemetery Records - Wapello Co., Iowa*, WPA.
224. Dorothy King, *Dorothy King letters*.
225. FamilySearch Ancestry File, AFN:17DJ-4Q6.
226. Dorothy King, *Dorothy King letters*.
227. FamilySearch Ancestry File, AFN:17DJ-4NR.
228. Dorothy King, *Dorothy King letters*.
229. Elizabeth Annette Schooler Watkins, *Schooler Family Web Page*, "Electronic."
- 229A. Elizabeth Annette Schooler Watkins, *Schooler Family Web Page*, "Electronic."
230. *Marriage Records - Wapello County, Iowa*, FHC#851207, p. 37.
231. *Salmon Tract Cemetery Records*.
232. *Marriage Records - Wapello County, Iowa*, FHC#851207, p. 37.
233. Elizabeth Annette Schooler Watkins, *Schooler Family Web Page*, "Electronic."
234. *Death Records - Idaho State*, FHC #64609.
235. Elizabeth Annette Schooler Watkins, *Schooler Family Web Page*, "Electronic."
236. *Death Records - Washington State*.
237. Elizabeth Annette Schooler Watkins, *Schooler Family Web Page*, "Electronic."
238. *Death Records - Idaho State*, Certificate of Death #1435.
239. *Official Temple Record*, Film #: 1760850.
240. Elizabeth Annette Schooler Watkins, *Schooler Family Web Page*, "Electronic."
241. *Death Records - Idaho State*, Certificate of Death #42575.
242. Elizabeth Annette Schooler Watkins, *Schooler Family Web Page*, "Electronic."
243. *Marriage Records - Lincoln County, Idaho*.
244. Elizabeth Annette Schooler Watkins, *Schooler Family Web Page*, "Electronic."
267. Dorothy King, *Dorothy King letters*.
268. Elizabeth Annette Schooler Watkins, *Schooler Family Web Page*, "Electronic."

- 269. *Justice of the Peace Record*.
- 270. *LDS Church Membership Records*.
- 271. *Social Security Death Index*, #544-58-3673.
- 272. *Justice of the Peace Record*.
- 273. Elizabeth Annette Schooler Watkins, *Schooler Family Web Page*, "Electronic."
- 274. "Shoshone Journal," Obituary, Says she died of pneumonia.
- 275. Elizabeth Annette Schooler Watkins, *Schooler Family Web Page*, "Electronic."
- 276. *Social Security Death Index*.
- 277. Elizabeth Annette Schooler Watkins, *Schooler Family Web Page*, "Electronic."
- 278. *Social Security Death Index*, #712-09-8820.
- 279. Elizabeth Annette Schooler Watkins, *Schooler Family Web Page*, "Electronic."
- 280. *Death Records - Idaho State*.
- 281. Elizabeth Annette Schooler Watkins, *Schooler Family Web Page*, "Electronic."
- 282. *Social Security Death Index*.
- 316. Elizabeth Annette Schooler Watkins, *Schooler Family Web Page*, "Electronic."
- 317. *Idaho State Certificate of Birth*, #73945.
- 318. *Social Security Death Index*, #540-12-8636.
- 319. Elizabeth Annette Schooler Watkins, *Schooler Family Web Page*, "Electronic."
- 320. *Social Security Death Index*, #540-20-3942.
- 321. Elizabeth Annette Schooler Watkins, *Schooler Family Web Page*, "Electronic."
- 336. Elizabeth Annette Schooler Watkins, *Schooler Family Web Page*, "Electronic."